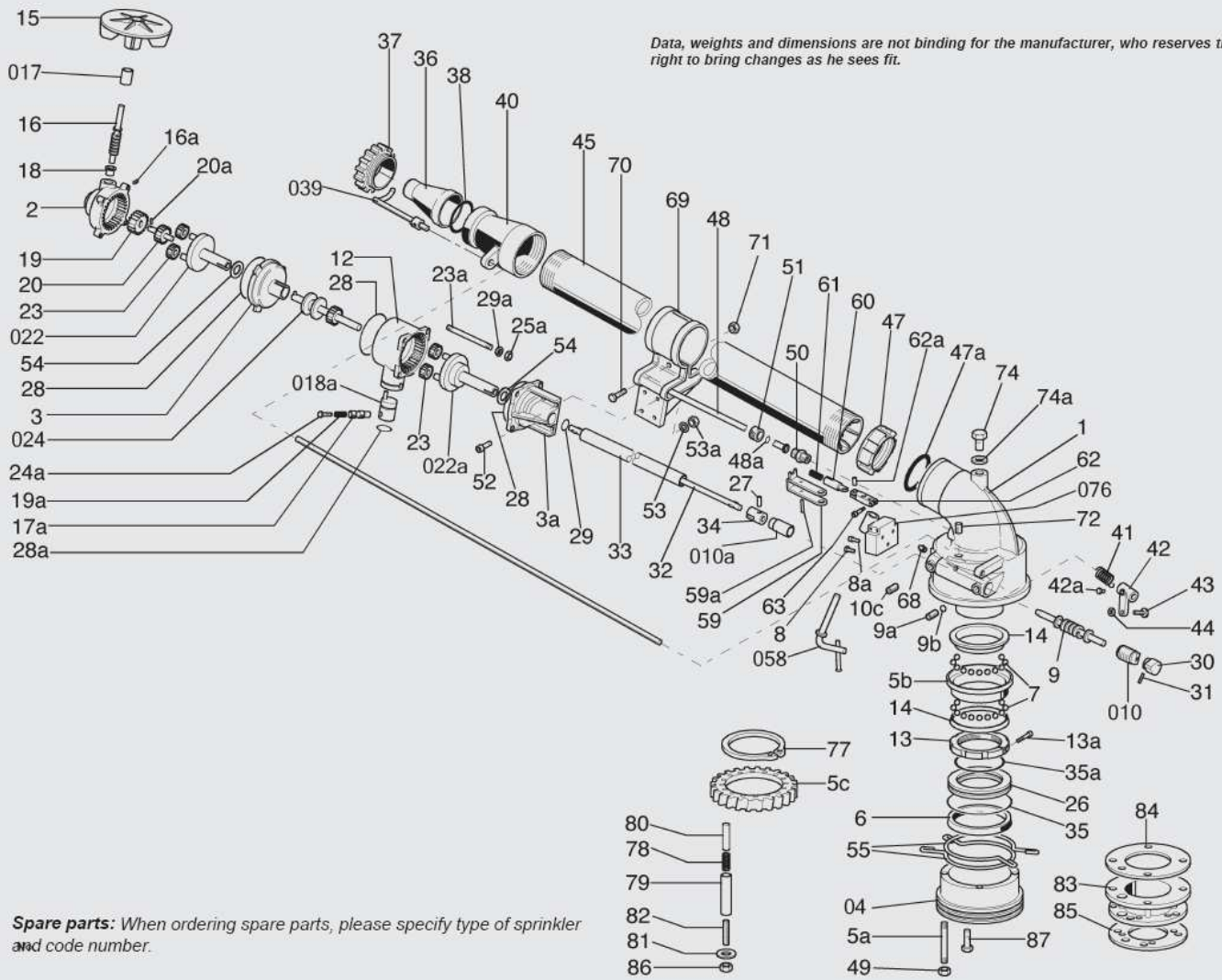


Data, weights and dimensions are not binding for the manufacturer, who reserves the right to bring changes as he sees fit.



Spare parts: When ordering spare parts, please specify type of sprinkler and code number.

Code	Fig No.	Qty	Description	Code	Fig No.	Qty	Description	Code	Fig No.	Qty	Description
141501	1	1	Sprinkler body	142517br	17br	1	Bearing	140342kit	042	1	Jet-breaker lever
140302	2	1	Gearbox	142518	18	1	Blind bearing	142542a	42a	1	Screw
140300G2ki	02	1	Complete gearbox	140318a-kit	018a	1	Bush	140343	43	1	Screw for lever
144103	3	1	Gearbox cover	144119	19	1	Crown	140344	44	1	Nut for lever
144103a	3a	1	Cover	140319a	19a	1	Spring	140333	45	1	Principal pipe
142504kit	04	1	Body support	144120	20	1	High speed pinion	142547	47	1	Locking ring for pipe
142505	5	1	Crown	140320a	20a	2	Pin for pinion	142547a	47a	1	O-ring
142505a	5a	4	Stud bolt	142521a	21a	1	Pin	142548	48	1	Secondary pipe
142505b	5b	1	Ring body support	141522kit	022	1	Planetary	142548a	48a	1	O-ring
142505c	5c	1	Ring	140322a-kit	022a	1	Second planetary	142549	49	4	Nut
142506	6	1	U-packing crown	144123	23	6	High speed gear	142550	50	1	Secondary nozzle
140112	7	52	Sphere	144123a	23a	4	Stud bolt	142551	51	1	Ferrule
142508	8	1	Screw 6x15 T.E.	140324kit	024	1	Pinion	144152	52	4	Screw
142508a	8a	2	Screw 6x15 T.C.E.I.	140324a	24a	1	Screw	140353	53	8	Washer grower d. 6
142509	9	1	Endless screw	140137a	25a	1	Nut	140353a	53a	4	Nut
140309a	9a	1	Grub screw	142526	26	1	O-ring	140354	54	2	Washer
140309b	9b	1	Plug	140328	28	3	O-ring	142555	55	2	Inversion ring
140310kit	010	1	Threaded bearing	144128a	28a	1	O-ring	142556	56	1	Protection
140310a-kit	010a	1	Internal bearing	140329	29	1	O-ring	142556a	56a	1	Screw
140310b	10b	2	Washer	140329a	29a	4	Washer	140356b	56b	1	Nut
142510c	10c	1	Grub screw	140330	30	1	Cam	142558kit	058	1	Central shaft
140311	11	1	Pinion bearing	140331	31	1	Elastic pin	142559kit	059	1	Inversion fork
140312	12	1	Gearbox central body	142532	32	1	Shafting bar	142559a	59a	1	Pin for fork
142513	13	1	Threaded ring for crown	142533	33	1	Shafting bar cover	142560	60	1	Spring house
140313a	13a	1	Screw	142535	35	1	O-ring	142561	61	1	Inversion spring
142514	14	2	Ball bearing ring	142535a	35a	1	O-ring	142562kit	062	1	Vice for inversion lever
142515br-	015br	1	Complete gearbox	142536	36	3	Main Nozzle	140362a	62a	1	Pin for vice
140315	15	1	Propeller	140117	37	1	Nozzle lock ring	140363	63	1	Screw
144116	16	1	Endless screw	140338	38	1	Packing for nozzle O-ring	140364	64	1	Screw
140316a	16a	1	Grub screw	142539kit	039	1	Jet-breaker	140364a	64a	1	Spring for bolt
140317kit	017	1	Bearings house	142540	40	1	Pipe-head	140366	66	1	DU-Bearing for gearbox
140317a	17a	1	Lever	142541	41	1	Jet breaker spring lever	140367	67	1	DU-Bearing

